

Second Language Acquisition

Session 1: Introduction

Sommersemester 2021

Albert Biel, M.A.

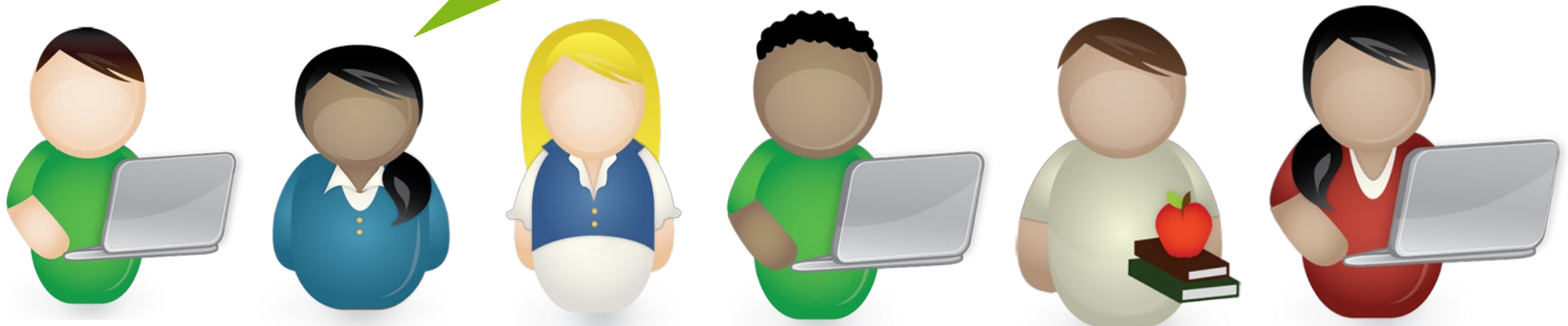
Mondays 16.00 – 18.00

Outline of the session

- Introduction
- Procedure of the course, active participation and assessment
- Expectations
- Seminar outline
- What is SLA all about?

Introduction

short intro:
Who are you?
What's important to you
for working together in this class?



Procedure

- every week online via Zoom unless other information
- readings and further tasks online
- RECOMMENDATION: Don't miss more than 2 of the 90 minutes online sessions or deadlines
- active participation required and expected :)
- email before class when not being able to participate (it's just polite)
- Get a copy (some cypys in the UB/ buy your own copy (26,99€)) of
 - Saville-Troike, M., & Barto, K. (2017). *Introducing Second Language Acquisition*. (3rd edition). Cambridge: Cambridge University Press.
 - Please only choose the third edition.

Expectations

<https://www.mentimeter.com/s/82f671bad264100a54e8a2f83a3443cf/cfc897942f84>

Assessment – Your own research projects

- carry out your own research (free choice of topic and method within the realm of SLA)
- present your research project in class
- write a short research paper (8-12 pages)

- to help you with your research
 - Research Technology Workshop on 12th June 2021.
 - feedback on projects from other participants
 - Guidelines for Research Papers.pdf

Assessment – research proposal

- 5 min PPT (or equivalent)
- presentations include
 - a research question
 - your chosen methodology (data collection & analysis)
 - 4-5 key references

Assessment – research paper

- Deadline: 1st September 2021, 11:59 pm
- write a short research paper (8-12 pages)
- including an introduction, literature review, methodology, results, discussion and conclusion

Seminar outline

- see seminar-details pdf (moodle)

What is SLA?

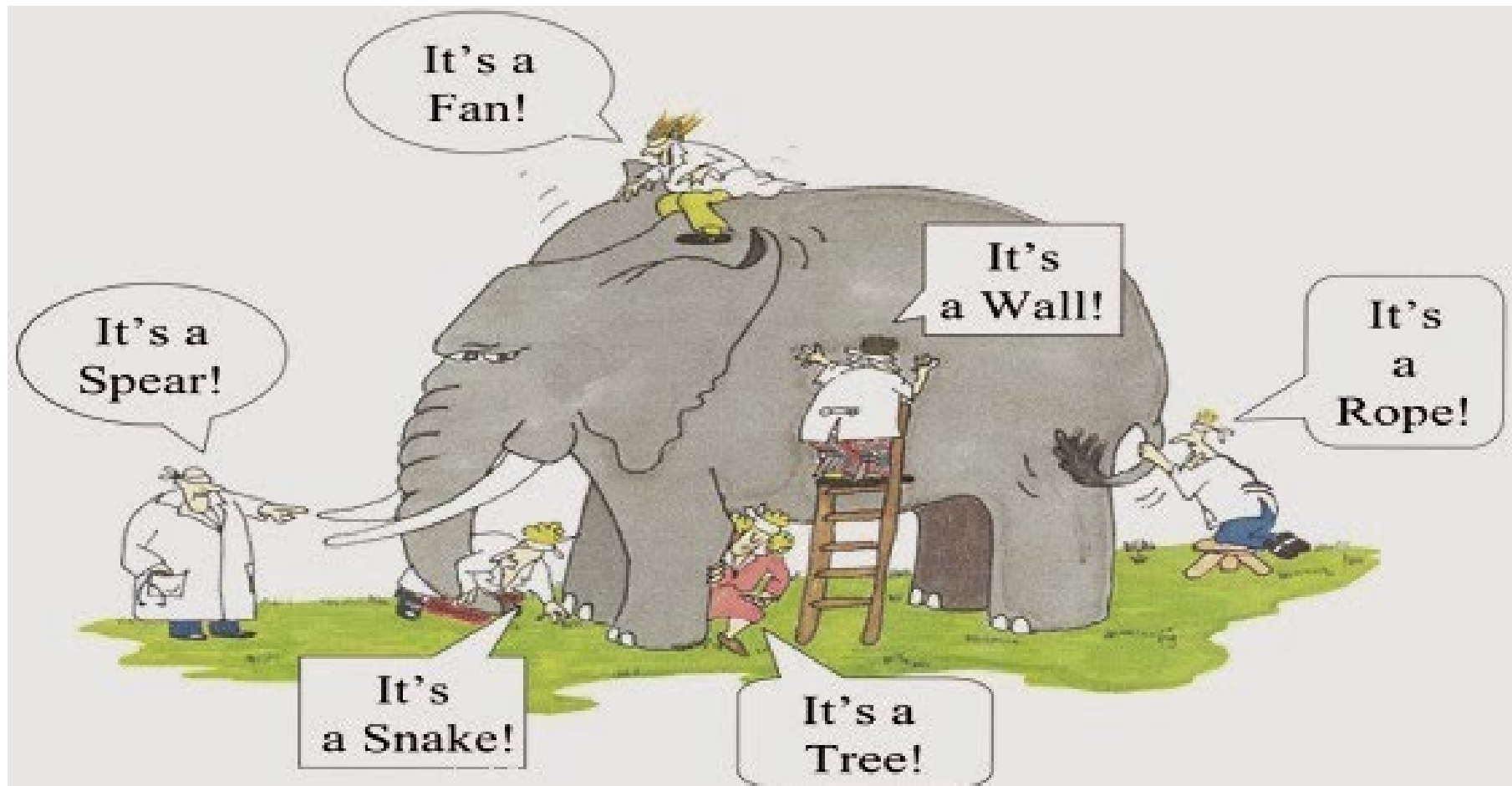
Second Language Acquisition (SLA) refers both to the study of individuals and groups who are learning a language subsequent to learning their first one as young children, and to the process of learning that language. (Saville-Troike & Barto 2017: 2)

Second language acquisition research focuses on the developing knowledge and use of a language by children and adults who already know at least one other language. (Lightbown & Spada 2002: 111)

Three Questions

- **What** exactly does the L2 learner come to know?
- **How** does the learner acquire this knowledge?
- **Why** are some learners more (or less) successful than others?

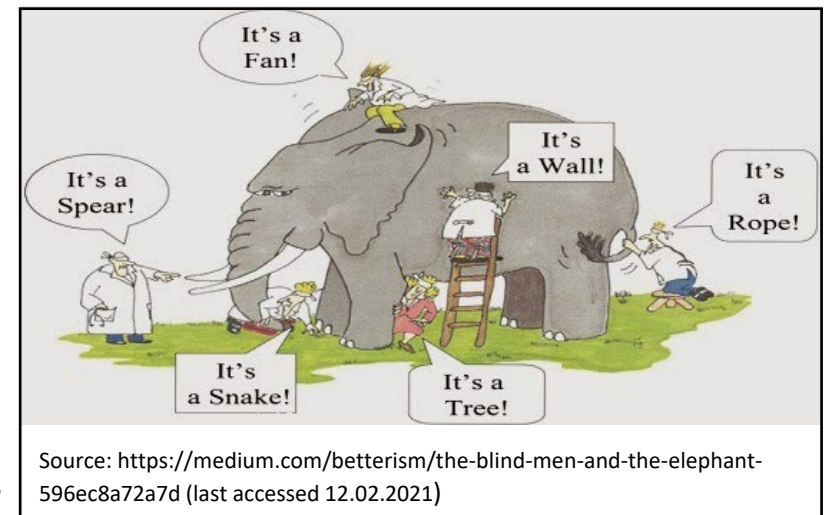
The difficult nature of SLA research



Source: <https://medium.com/betterism/the-blind-men-and-the-elephant-596ec8a72a7d> (last accessed 12.02.2021)

The difficult nature of SLA research

- linguistic perspective
 - linguistic competence and linguistic performance
- psychological/-linguistic perspective
 - mental & cognitive processes in acquisition
 - representation of language in the brain
- sociolinguistic perspective
 - variability in linguistic performance
 - communicative competence
- sociopsychological perspective
 - individual differences such as motivation, identity etc.
 - social contexts of learning



Reading for next week (19th April)

- Ch. 2 from Saville-Troike & Barto (2017)

References

Saville-Troike, M., & Barto, K. (2017). *Introducing Second Language Acquisition*. (3rd edition). Cambridge: Cambridge University Press.